

Dark Continent Bow Hunting South Africa



Who better to understand the specific needs of the bow hunter than a bow hunter himself?

Francois is a keen bow hunter and an accomplished tracker – each hunter is guaranteed personal attention during their stay with us.

Hunting takes place from 9 comfortable, well constructed and strategically placed blinds. Each blind has its own water source as well as salt and molasses licks. High quality feed is fed at each blind each day to help achieve maximum success.

We also have exemption and hunting is selectively allowed throughout the year.

Species: Nyala, Springbuck, Blesbuck, Impala, Blue Wildebeest, Zebra, Red Hartebeest, Gemsbok, Kudu & White Blesbuck – (other species available by prior arrangement.)

We have excellent cold room and slaughtering facilities as well as fully equipped meat processing facilities. We take the utmost care in the recovery of your animal to ensure that your meat and trophy remains in prime condition. Skinning and caping is done on the premises and immediately upon recovery of your animal.

Our facilities have been specifically designed and constructed to cater for the bow hunter and their family and friends – these consist of the following:

A large enclosed Lapa suitable for all weather conditions with dining room, kitchen and entertainment area, (Stove, microwave, fridges, cooking utensils and cutlery, pool table, table tennis, bar etc.)

Swimming pool and lapa and its own 3D Bow Range

House with three bedrooms - sleeps 7, kitchen and entertainment area. (stove, microwave, fridges, cooking utensils and cutlery).

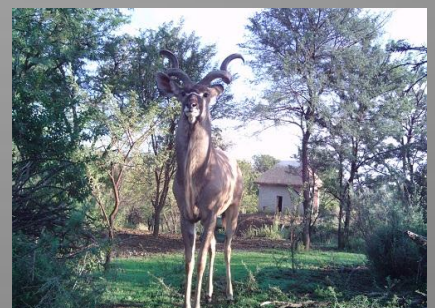
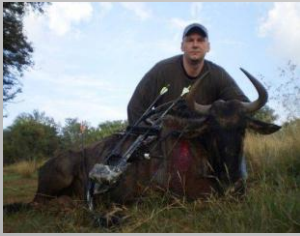
Chalet with bathroom & Kitchen - sleeps 3

Chalet with bathroom - sleeps 3

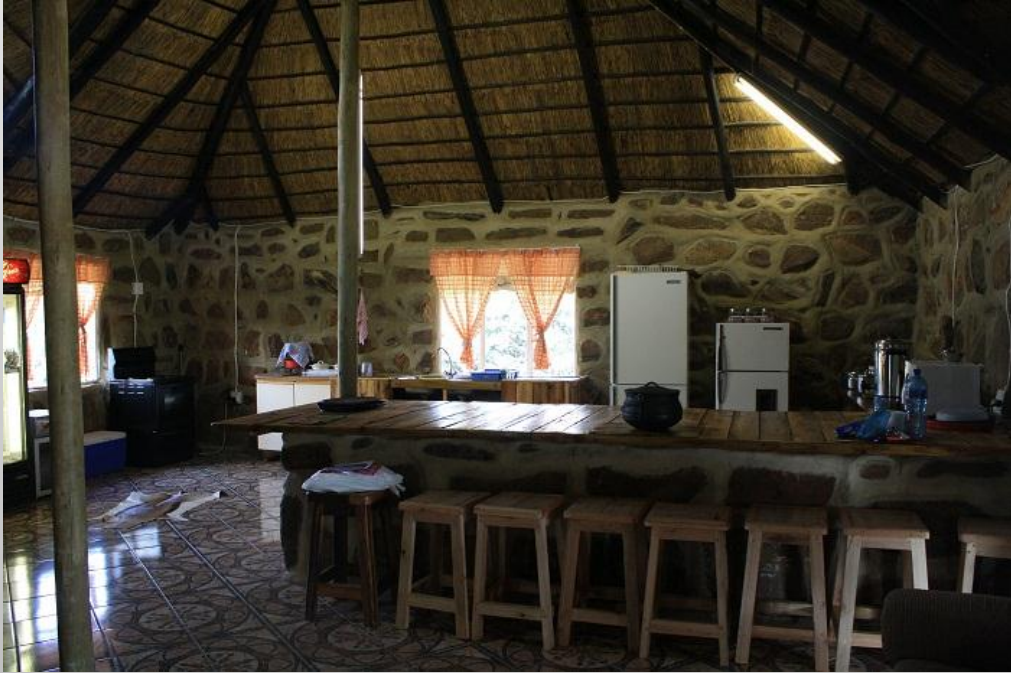
Chalet with bathroom - sleeps 3



gallery



Accommodation



- Swimming pool and 3D Bow Range.
- House with three bedrooms - sleeps 7, kitchen and entertainment area. (stove, microwave, fridges, cooking utensils and cutlery).
- Chalet with bathroom & Kitchen - sleeps 3
- Chalet with bathroom - sleeps 3
- Chalet with bathroom - sleeps 3





Animal Price List

- Bluewildebeest (Male): \$750.00
- Bluewildebeest (Female): \$400.00
- Redhartbees (Male): \$900.00
- Redhartbees (Female): \$900.00
- Impala 20" +: \$350.00
- Impala (Male): \$350.00
- Impala (Female): \$180.00
- Blesbuck (Male): \$250.00
- Blesbuck (Female): \$200.00
- Zebra: \$900.00
- Gemsbok (Oryx) (Male): \$850.00
- Gemsbok (Female): \$850.00
- White Blesbuck (Male): \$350.00
- White Blesbuck (Female): \$350.00
- Kudu (Male) : \$1800.00
- Kudu (Female): \$450.00
- Nyala (Male): \$2500.00

Accommodation Prices

- *Hunters: \$200.00 per day*
- *Non-Hunters: \$100.00 per day*
- *Children: \$25.00 per day*



Price includes:

- *Full Board – 3 meals p/day / beverages / all liquor costs in moderation*
- *Extremely well appointed accommodation (up to 8 Hunters) with private splash pool, pool table / Satellite TV and 3D Bow range.*
- *All local transportation including: Airport meet and greet / drop off.*
- *Videos / Photographs during your stay / hunt.*
- *All Tracker / Tracking dog / Skinning / Slaughter / Refrigeration costs.*
- *All Hunting vehicle costs.*
- *All Trophy caping costs and delivery to local taxidermists. (Trophy Taxidermy costs not included.)*
- *Professional guides*
- *Assistance with Bow setup / Technical advice /Bow Accessories / Spares / Clothing etc. should this be required.*
- *Assistance with Flight Bookings if reqd.*

Dark Continent Bow Hunting South Africa

*Join us for an unforgettable hunting
experience*



please contact us

Sheryl / Sean

- Mobile : +27 76 737 6249
+27 82 520 1433
- Email: darkc@telkomsa.net
- Fax: +27 11 433 2334

