



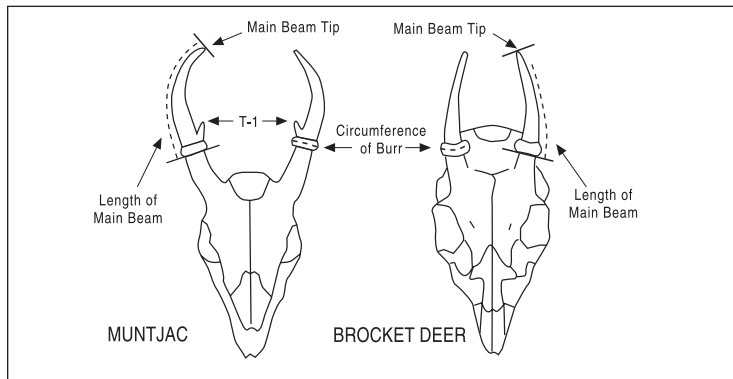
SAFARI CLUB INTERNATIONAL

## METHOD

☐ 26-T ☐ 26-NT

## ENTRY FORM

For all antlers of muntjac, brocket, pudu and tufted deer. All tines (if present) in these tiny deer will count in the score, but some will be typical and some non-typical (see special instructions).



Hunter \_\_\_\_\_ How you want your name to appear in the Record Book

Membership No. \_\_\_\_\_ Phone \_\_\_\_\_

e-mail \_\_\_\_\_

Address \_\_\_\_\_

I certify that, to the best of my knowledge, I took this animal without violating the wildlife laws or ethical hunting practices of the country or province in which I hunted. I also certify that, to the best of my knowledge, the laws of my country have not been violated by my taking or importing this animal.

Free-ranging ☐ Yes ☐ No (REQUIRED)

Signature \_\_\_\_\_

The acceptance or denial of all entries are at the discretion of Safari Club International, its Board and committees. Entries are subject to review by the Record Book Committee of SCI at any time. All photos and entries submitted to SCI become SCI's property.

Submit to: Safari Club International 4800 W. Gates Pass Rd., Tucson, AZ 85745 USA

Active SCI Membership Required to submit an entry

- ☐ \$35 R.B. Entry Fee
- ☐ \$90 R.B. Entry Fee & Medallion Award
- ☐ \$150 R.B. Entry Fee, Photo Medallion & photo upload to the Online Record Book

### New Membership Offer

- ☐ 1 Year New Membership Only

Domestic / International  
\$35 / \$60

### Membership Renewal

- ☐ 1 Year Membership
- ☐ 3 Year Membership

Domestic / International  
\$65 / \$90  
\$150 / \$225

### Membership - Digital Publications Only

- ☐ 1 Year
- ☐ 3 Year

\$35 All Countries  
\$60 All Countries

### To enter into Record Book and/or purchase a Medallion:

1) All entries must be complete, signed by hunter and accompanied by fees and photographs of the trophy.

2) Field photos must be submitted in order to process the entry.

- ☐ For animals with branched antlers: include enough photos so that all tines are clearly visible

3) Clearly label back of photo with hunter's name, species name, and date taken

We Accept: ☐ MC ☐ Visa ☐ AMX ☐ Discover ☐ Diners Club

Card Number

US Currency only. Credit Cards Preferred

Expiration Date

Animal \_\_\_\_\_

Remeasurement? ☐ Yes ☐ No Former Score \_\_\_\_\_ Record No. \_\_\_\_\_

Date Taken \_\_\_\_\_

Month / Day / Year

☐ Rifle ☐ Handgun ☐ Muzzleloader ☐ Bow ☐ Crossbow ☐ Picked Up

Place Taken \_\_\_\_\_

Country

State or Province

Locality \_\_\_\_\_

(GMU, Mtn Range, Ranch, City, Town)

Guide \_\_\_\_\_ Hunting Co. \_\_\_\_\_

I. Length of Main Beam L \_\_\_\_\_ /16 R \_\_\_\_\_ /16

### II. Length of Typical Tines

(Muntjacs can have only one typical brow tine per antler. Tines are not typical in the other species.)

T-1 L \_\_\_\_\_ /16 R \_\_\_\_\_ /16

### III. Length of Non-typical Tines

(In muntjacs, any tines other than one brow tine per antler are non-typical. In brocket deer, any tines are non-typical. Pudu and tufted deer do not have tines.)

NT-1 L \_\_\_\_\_ /16 R \_\_\_\_\_ /16

NT-2 L \_\_\_\_\_ /16 R \_\_\_\_\_ /16

NT-3 L \_\_\_\_\_ /16 R \_\_\_\_\_ /16

NT-4 L \_\_\_\_\_ /16 R \_\_\_\_\_ /16

NT-5 L \_\_\_\_\_ /16 R \_\_\_\_\_ /16

### IV. Circumference of Burr

L \_\_\_\_\_ /16 R \_\_\_\_\_ /16

### V. Total Score

/16

### Supplemental Information

Number of Typical Points  
(Muntjac: Brow tine plus beam tip)  
(Others: Beam tip only)

L \_\_\_\_\_ R \_\_\_\_\_

Number of Non-typical Points  
(Muntjac: Any tines other than one brow tine per antler)  
(Others: Any tines)

L \_\_\_\_\_ R \_\_\_\_\_

Total Number of Points  
(All tines plus beam tip)

L \_\_\_\_\_ R \_\_\_\_\_

Inside Span of Main Beams \_\_\_\_\_

Measurer \_\_\_\_\_

Date Measured \_\_\_\_\_ Measurer No. \_\_\_\_\_

Month / Day / Year

E-mail \_\_\_\_\_

Signature \_\_\_\_\_

COPYRIGHT © SAFARI CLUB INTERNATIONAL

7/16